

KARTUŞ & MİKSER TİP SALMASTRA

Katalogu

Yenilikçi Sızdırmazlık Çözümleri.

“ATEX BELGELİ KARTUŞ VE MİKSER TİP SALMASTRALAR”

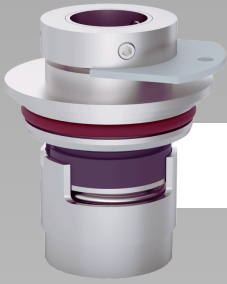
Rotaseal'in kartuş tip ve mikser tip salmastraları, patlayıcı ortamlarda kullanılmak üzere tasarlanmış olup, ATEX sertifikasına sahiptir. ATEX belgesi, bu ürünlerin Avrupa Birliği direktiflerine uygun olarak, potansiyel olarak patlayıcı atmosferlerde güvenli bir şekilde çalışabileceğini kanıtlar. Kartuş tip salmastralar, montaj kolaylığı ve güvenilir sızdırmazlık performansı ile öne çıkarken, mikser tip salmastralar ise yüksek tork ve basınç altında dahi üstün performans sergiler. Bu özellikler, tehlikeli ortamlarda çalışan endüstriler için kritik öneme sahiptir.

ATEX sertifikası, Rotaseal'in ürünlerinin yalnızca yüksek kalitede üretildiğini değil, aynı zamanda güvenlik standartlarını da karşıladığını gösterir. Kartuş tip ve mikser tip salmastralar, kimya, petrokimya, gıda, ilaç ve diğer endüstrilerde, patlama riski taşıyan ortamlarda güvenli bir çalışma sağlar. Bu sertifikalı ürünler, hem operatörlerin hem de çevrenin korunmasını sağlayarak, işletmelerin güvenlik standartlarını en üst seviyede tutmalarına yardımcı olur.



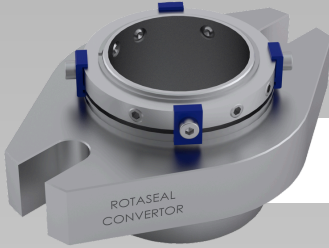
ATEX

INDEX



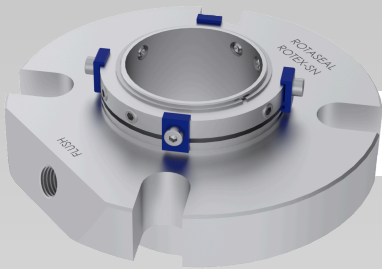
01-02

RTGF



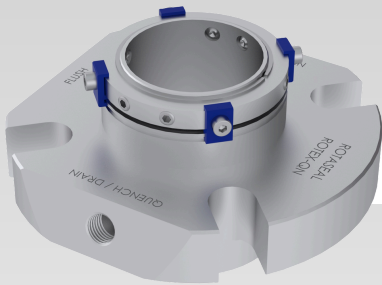
04-05

KONVERTÖR



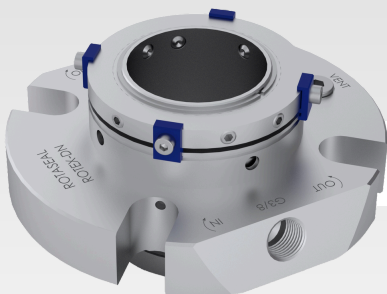
07-09

ROTEX-SN/SNO



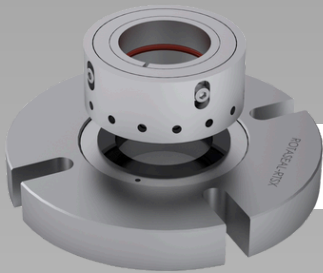
10-12

ROTEX-QN/TN



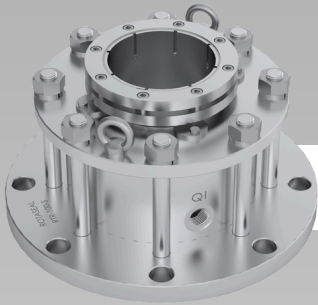
13-15

ROTEX-DN



16-17

RTSX



19-21

RTR100-S/RTR100-SB



22-24

RTR100-D/RTR100-DB



25-27

RTR200-S/RTR200-SB



28-30

RTR200-D/RTR200-DB



31-32

RTMR-D/RTMR-DB



• **ÖZELLİKLER**

Tekli Salmastra
Kartuş tipi
Balanslı
Dönme Yönüne Bağımsız

• **ÇALIŞMA LİMİTLERİ**

Şaft Ölçüsü: $d_1=12,16,22$ mm
Sıcaklık: $t=-30...200$ °C
Basınç: $p_1=1,2$ bar
Çevresel Hız: $V_g=10$ m/s

• **MATERYAL KOMBİNASYONLARI**

Döner Elemanın Yüzeyi: SiC, TuC
Sabit Elemanın Yüzeyi: Car, SiC, TuC
Elastomerler: FKM, NBR

• **UYGULAMA ALANLARI**

Temiz Su
Atık Su
Orta Derecede Aşındırıcı Sıvılar

• **TECHNICAL FEATURES**

Single Seal
Cartridge Type Seal
Balanced
Independent of Rotation Direction

• **OPERATING RANGES**

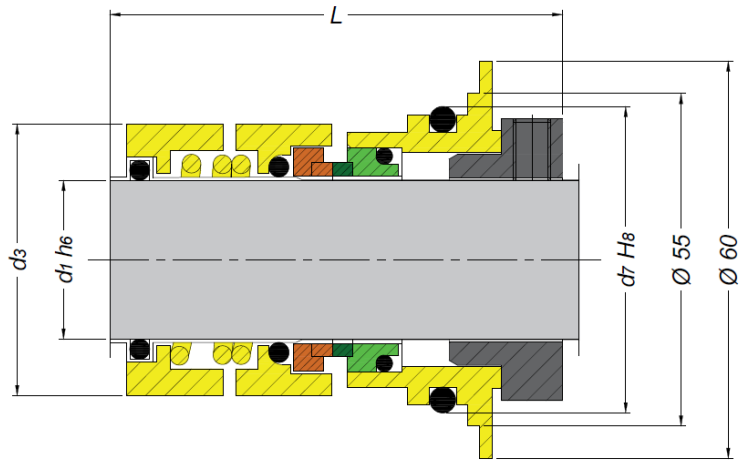
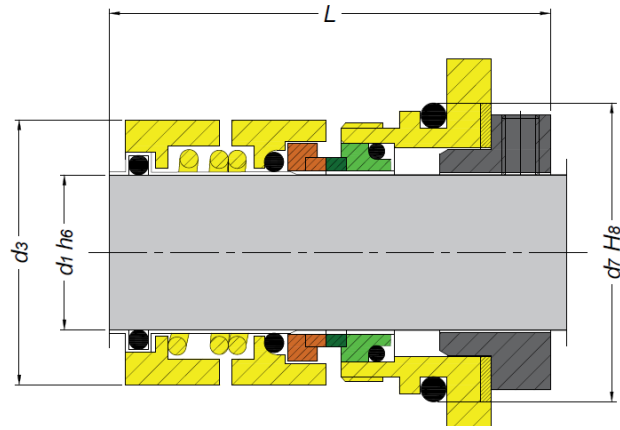
Shaft Diameter : $d_1=12,16,22$ mm
Temperature: $t=-30...200$ °C
Pressure: $p_1=1,2$ bar
Sliding Velocity: $V_g=10$ m/s

• **MATERIAL COMBINATION**

Seal Face: SiC, TuC
Seat Face: Car, SiC, TuC
Secondary Seal: FKM, NBR

• **APPLICATION AREA**

Clean Water
Sewage Water
Moderately Corrosive Fluids



RTGF ÖLÇÜ TABLOSU/DIMENSION TABLE				
MODEL	d1	d3	d7	L
RTGF	12	25	29	57,5
RTGF	16	30,5	34	58,5
RTGF	22	39,5	50	72,8

Tıklayın & Güncel Kalın!

Click & Stay Updated!



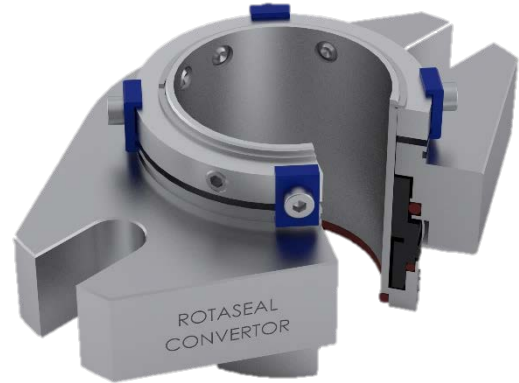


POMPA VERİMLİLİĞİNİ ARTIRARAK ENERJİ TÜKETİMİNİ AZALTIR.



RTGF SALMASTRALAR

Aşındırıcı ve yüksek sıcaklıklı ortamlara karşı %70 daha dayanıklıdır.



• **ÖZELLİKLER**

- Tekli Salmastra
- Kartuş tipi
- Balanslı
- Dönme Yönüne Bağımsız

• **AVANTAJLAR**

- Standart Pompa Proseslerinde İdeal Olarak Kullanılır
- Uzun Ömürlü Kullanımlıdır
- Kurulum ve Montaj Hataları Önlenir
- İşletme Maliyeti Düşüktür
- Kir ve Töz Montaj Sırasında Salmastraya Zarar Veremez
- Önceden Kurulu Salmastra Grubu Sayesinde Basit ve Kolay Kurulum Sağlar ve Montaj Sırası Süre Kayıpları İndirgenmiş Olur

• **ÇALIŞMA LİMİTLERİ**

- Şaft Ölçüsü: $d_1=25...100$ mm
(Talep üzerinde diğer boyutlar yapılır)
- Sıcaklık: $t=-20...200$ °C
- Kar/SiC yüzey kombinasyonu için:
Basınç: $p_1=25$ bar
Çevresel Hız: $V_g=16$ m/s
- SiC/SiC ve TuC/SiC yüzey kombinasyonu için:
Basınç: $p_1=12$ bar
Çevresel Hız: $V_g=10$ m/s
- Eksenel Hareket: ± 1.0 mm, $d_1 \geq 75$ mm ± 1.5 mm

• **TECHNICAL FEATURES**

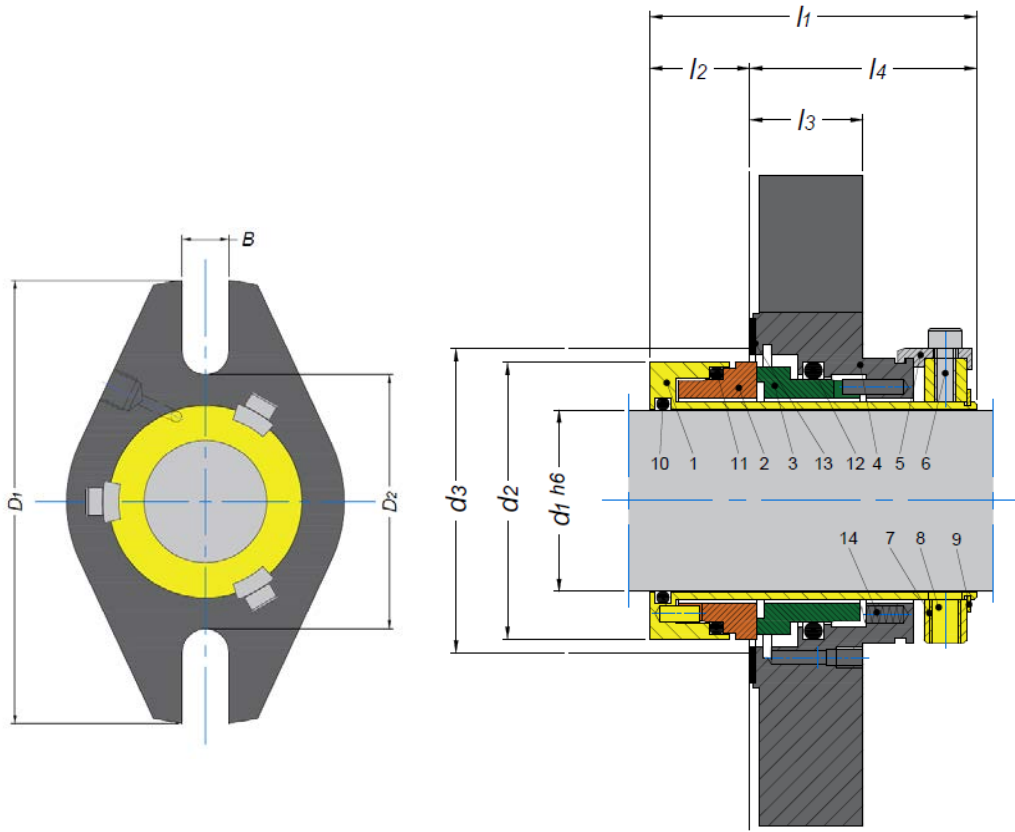
- Single Seal
- Cartridge Type Seal
- Balanced
- Independent of Rotation Direction

• **ADVANTAGES**

- An Ideal Seal for Using in Standard Pump Processes
- Extended Service Life
- Preventing Installation Faults
- Cost Effective
- No Damage Due to Dusts Entered During Assembly
- Minimizing Time Loss Due To Easy Installation of Pre-Assembled Units

• **OPERATING RANGES**

- Shaft Diameter: $d_1=25...100$ mm
(Other Sizes on Request)
- Temperature: $t=-20...200$ °C
- Car/SiC Face material combination:
Pressure: $p_1=25$ bar
Sliding Velocity: $V_g=16$ m/s
- SiC/SiC ve TuC/SiC Face material combination:
Pressure: $p_1=12$ bar
Sliding Velocity: $V_g=10$ m/s
- Axial Movement: ± 1.0 mm, $d_1 \geq 75$ mm ± 1.5 mm



- | | |
|-------------------------------------|------------------------------------|
| 1. Burç/Bush | 7. Sabitleme Bileziği/Drive Collar |
| 2. Döner Eleman/Seal Face | 8. Setskur/Setscrew |
| 3. Sabit Eleman/Stationary Seat | 9. Segman/Snap Ring |
| 4. Gövde/Cover | 10,11,12. O-Ring |
| 5. Montaj Tırnağı /Assembly Fixture | 13. Conta /Gasket |
| 6. Civata / Screw | 14. Yay/Spring |

KONVERTÖR ÖLÇÜ TABLOSU / CONVERTOR DIMENSION TABLE										
d1	d2	d3 min	d3 max	l1	l2	l3	l4	D1	D2	B
25	43,0	44,0	51,5	63,0	19,0	25,4	44,0	105,0	62,0	13,2
28	46,0	47,0	52,0	63,0	19,0	25,4	44,0	105,0	62,0	13,2
30	48,0	49,0	56,0	63,0	19,0	25,4	44,0	105,0	65,0	13,2
32	49,8	51,0	57,0	63,0	19,0	25,4	44,0	108,0	67,0	13,2
33	49,8	51,0	57,0	63,0	19,0	25,4	44,0	108,0	67,0	13,2
35	53,0	54,0	61,5	63,0	19,0	25,4	44,0	113,0	70,0	13,2
38	56,0	57,0	66,0	63,0	19,0	25,4	44,0	123,0	75,0	13,2
40	58,0	59,0	68,0	63,0	19,0	25,4	44,0	123,0	75,0	14,2
42	60,5	61,5	69,5	63,0	19,0	25,4	44,0	133,0	80,0	14,2
43	60,5	61,5	70,5	63,0	19,0	25,4	44,0	133,0	80,0	14,2
45	62,5	64,0	73,0	63,0	19,0	25,4	44,0	138,0	81,0	14,2
48	65,6	67,0	75,0	63,0	19,0	25,4	44,0	138,0	84,0	14,2
50	68,0	69,0	78,0	63,0	19,0	25,4	44,0	148,0	87,0	14,2
53	72,0	73,0	87,0	63,0	19,0	25,4	44,0	148,0	97,0	18,0
55	73,0	74,0	83,0	63,0	19,0	25,4	44,0	148,0	90,0	18,0
60	78,0	79,0	91,0	63,0	19,0	25,4	44,0	157,0	102,0	18,0
65	84,8	85,7	98,5	63,0	19,0	25,4	44,0	163,0	109,0	18,0
70	93,0	95,0	108,0	63,0	19,0	25,4	44,0	178,0	118,0	18,0
75	100,0	101,6	118,0	84,0	26,0	28,0	58,0	190,0	129,0	18,0
80	106,4	108,0	124,0	84,0	26,0	28,0	58,0	195,0	135,0	18,0
85	109,5	111,1	128,0	84,0	26,0	28,0	58,0	198,0	139,0	22,0
90	115,9	117,5	135,0	84,0	26,0	28,0	58,0	205,0	145,0	22,0
95	119,1	120,7	138,0	84,0	26,0	28,0	58,0	208,0	148,0	22,0
100	125,4	127,0	144,0	84,0	26,0	28,0	58,0	218,0	154,0	22,0

Tıklayın & Güncel Kalın!

Click & Stay Updated!



HER SEKTÖRE SIZDIRMAZLIK ÇÖZÜMLERİ.



ROTEX SALMASTRALAR

Güvenlik: Tehlikeli maddelere maruz kalmayı %80 oranında azaltır.

RTR SALMASTRALAR

Sızıntı Önleme: Süreç bütünlüğünü sağlayarak sızıntı riskini %75'e kadar azaltır.





• **ÖZELLİKLER**

- Tekli Salmastra
- Kartuş tipi
- Balanslı
- Dönme Yönüne Bağımsız

• **AVANTAJLAR**

- Standart Pompa Proseslerinde İdeal Olarak Kullanılır
- Standardizasyon için İdeal Salmastralardır
- Santrifüj Pompalarda Dinamik Yüklü O-Ring Sayesinde Şaft Zarardan Korunur
- Uzun Ömürlü Kullanımlıdır
- Kurulum ve Montaj Hataları Önlenir
- İşletme Maliyeti Düşüktür
- Kir ve Toz Montaj Sırasında Salmastraya Zarar Veremez
- Önceden Kurulu Salmastra Grubu Sayesinde Basit ve Kolay Kurulum Sağlar ve Montaj Sırasında Süre Kayıpları İndirgenmiş Olur
- Müşteriye Özel Tasarlanabilir Sistem

• **ÇALIŞMA LİMİTLERİ**

- Şaft Ölçüsü: $d_1=25...100$ mm
(Talep üzerinde diğer boyutlar yapılır)
- Sıcaklık: $t=-20...220$ °C
- Kar/SiC yüzey kombinasyonu için:
Basınç: $p_1=25$ bar
Çevresel Hız: $V_g=16$ m/s
- SiC/SiC ve TuC/SiC yüzey kombinasyonu için:
Basınç: $p_1=12$ bar
Çevresel Hız: $V_g=10$ m/s
- Eksenel Hareket: ± 1.0 mm, $d_1 \geq 75$ mm ± 1.5 mm

• **TECHNICAL FEATURES**

- Single Seal
- Cartridge Type Seal
- Balanced
- Independent of Rotation Direction

• **ADVANTAGES**

- An Ideal Seal for Using in Standard Pump Processes
- An Ideal Seal for Standardizations
- In Centrifugal Pumps, Dynamically Loaded O-Rings Protect Shaft
- Extended Service Life
- Preventing Installation Faults
- Cost Effective
- No Damage Due to Dusts Entered During Assembly
- Minimizing Time Loss Due to Easy Installation of Pre-Assembled Units
- Special Design Based on Customer Request

• **OPERATING RANGES**

- Shaft Diameter : $d_1=25...100$ mm
(Other Sizes on Request)
- Temperature: $t=-20...220$ °C
- Car/SiC Face material combination:
Pressure: $p_1=25$ bar
Sliding Velocity: $V_g=16$ m/s
- SiC/SiC ve TuC/SiC Face material combination:
Pressure: $p_1=12$ bar
Sliding Velocity: $V_g=10$ m/s
- Axial Movement: ± 1.0 mm, $d_1 \geq 75$ mm ± 1.5 mm

- **ROTEX-SNO**

Tekli kartuş salmastra, bağlantı yeri yoktur.

- **ROTEX-SNO**

It is a single type cartridge type seal without connections for dead-end operations.

- **UYGULAMA ALANLARI**

Kimya ve Petrokimya Endüstrisi
Gıda ve İçecek Endüstrisi
Santrifüj Pompalar
Proses Pompalar

- **APPLICATION AREA**

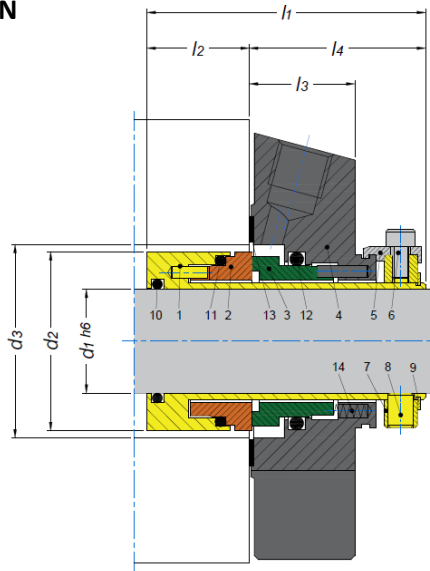
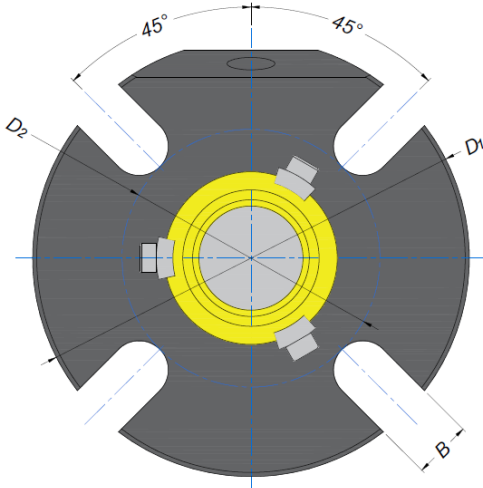
*Chemical and Petrochemical Industry
Food and Beverage Industry
Centrifugal Pumps
Process Pumps*

Tıklayın & Güncel Kalın!

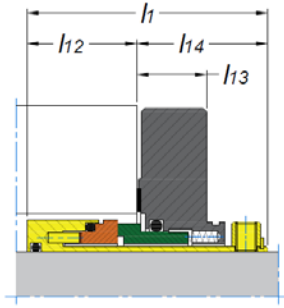
Click & Stay Updated!



ROTEX-SN



ROTEX-SNO



1. Burç/Bush
2. Döner Eleman/Seal Face
3. Sabit Eleman/Stationary Seat
4. Gövde/Cover
5. Montaj Tırnağı /Assembly Fixture
6. Civata / Screw
7. Sabitleme Bileziği /Drive Collar

8. Setskur/Set screw
9. Segman/Snap Ring
10. O-ring
11. O-ring
12. O-ring
13. Conta/Gasket
14. Yay/Spring

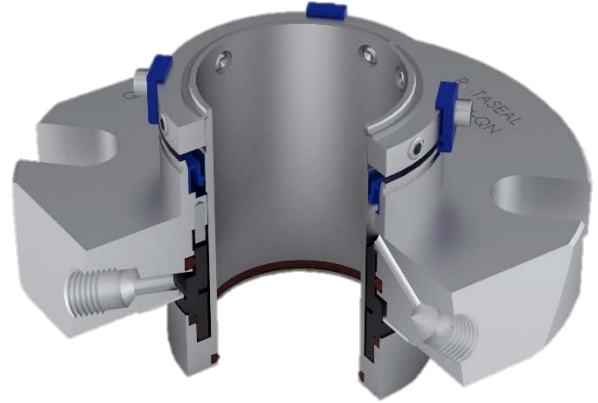
ROTEX-SN & ROTEX-SNO ÖLÇÜ TABLOSU/DIMENSION TABLE

d1	d2	d3 min	d3 max	l1	l2	l3	l4	l12	l13	l14	D1	D2	B
25	43,0	44,0	51,5	67,0	24,6	25,4	42,4	32,0	17,5	35,0	105,0	62,0	13,2
28	46,0	47,0	52,0	67,0	24,6	25,4	42,4	32,0	17,5	35,0	105,0	62,0	13,2
30	48,0	49,0	56,0	67,0	24,6	25,4	42,4	32,0	17,5	35,0	105,0	65,0	13,2
32	49,8	51,0	57,0	67,0	24,6	25,4	42,4	32,0	17,5	35,0	108,0	67,0	13,2
33	49,8	51,0	57,0	67,0	24,6	25,4	42,4	32,0	17,5	35,0	108,0	67,0	13,2
35	53,0	54,0	61,5	67,0	24,6	25,4	42,4	32,0	17,5	35,0	113,0	70,0	13,2
38	56,0	57,0	66,0	67,0	24,6	25,4	42,4	32,0	17,5	35,0	123,0	75,0	13,2
40	58,0	59,0	68,0	67,0	24,6	25,4	42,4	32,0	17,5	35,0	123,0	75,0	14,2
42	60,5	61,5	69,5	67,0	24,6	25,4	42,4	32,0	17,5	35,0	133,0	80,0	14,2
43	60,5	61,5	70,5	67,0	24,6	25,4	42,4	32,0	17,5	35,0	133,0	80,0	14,2
45	62,5	64,0	73,0	67,0	24,6	25,4	42,4	32,0	17,5	35,0	138,0	81,0	14,2
48	65,6	67,0	75,0	67,0	24,6	25,4	42,4	32,0	17,5	35,0	138,0	84,0	14,2
50	68,0	69,0	78,0	67,0	24,6	25,4	42,4	32,0	17,5	35,0	148,0	87,0	14,2
53	72,0	73,0	87,0	67,0	24,6	25,4	42,4	32,0	17,5	35,0	148,0	97,0	18,0
55	73,0	74,0	83,0	67,0	24,6	25,4	42,4	32,0	17,5	35,0	148,0	90,0	18,0
60	78,0	79,0	91,0	67,0	24,6	25,4	42,4	32,0	17,5	35,0	157,0	102,0	18,0
65	84,8	85,7	98,5	67,0	24,6	25,4	42,4	32,0	17,5	35,0	163,0	109,0	18,0
70	93,0	95,0	108,0	67,0	24,6	25,4	42,4	32,0	17,5	35,0	178,0	118,0	18,0
75	100,0	101,6	118,0	84,0	26,6	28,0	57,4	37,9	22,0	46,1	190,0	129,0	18,0
80	106,4	108,0	124,0	84,0	26,6	28,0	57,4	37,9	22,0	46,1	195,0	135,0	18,0
85	109,5	111,1	128,0	84,0	26,6	28,0	57,4	37,9	22,0	46,1	198,0	139,0	22,0
90	115,9	117,5	135,0	84,0	26,6	28,0	57,4	37,9	22,0	46,1	205,0	145,0	22,0
95	119,1	120,7	138,0	84,0	26,6	28,0	57,4	37,9	22,0	46,1	208,0	148,0	22,0
100	125,4	127,0	144,0	84,0	26,6	28,0	57,4	37,9	22,0	46,1	218,0	154,0	22,0

Tıklayın & Güncel Kalın!

Click & Stay Updated!





- **ÖZELLİKLER**

- Tekli Salmastra
- Kartuş tipi
- Balanslı
- Dönme Yönüne Bağımsız
- Basıncsız Yıkamaya Uygun

- **AVANTAJLAR**

- Standart Pompa Proseslerinde İdeal Olarak Kullanılır
- Standardizasyon için İdeal Salmastralardır
- Santrifüj Pompalarda Dinamik Yüklü O-Ring Sayesinde Şaft Zarardan Korunur
- Uzun Ömürlü Kullanımlıdır
- Kurulum ve Montaj Hataları Önlenir
- İşletme Maliyeti Düşüktür
- Kir ve Toz Montaj Sırasında Salmastraya Zarar Veremez
- Önceden Kurulu Salmastra Grubu Sayesinde Basit ve Kolay Kurulum Sağlar ve Montaj Sırasında Süre Kayıpları İndirgenmiş Olur
- Müşteriye Özel Tasarlanabilir Sistem

- **ÇALIŞMA LİMİTLERİ**

- Şaft Ölçüsü: $d_1=25...100$ mm
(Talep üzerinde diğer boyutlar yapılır)
- Sıcaklık: $-20...220$ °C
- Kar/SiC yüzey kombinasyonu için:
Basınç: $p_1=25$ bar
Çevresel Hız: $V_g=16$ m/s
- SiC/SiC ve TuC/SiC yüzey kombinasyonu için:
Basınç: $p_1=12$ bar
Çevresel Hız: $V_g=10$ m/s
- Eksenel Hareket: ± 1.0 mm, $d_1 \geq 75$ mm ± 1.5 mm

- **TECHNICAL FEATURES**

- Single Seal
- Cartridge Type Seal
- Balanced
- Independent of Rotation Direction
- Unpressurized Quench

- **ADVANTAGES**

- An Ideal Seal for Using in Standard Pump Processes
- An Ideal Seal for Standardizations
- In Centrifugal Pumps, Dynamically Loaded O-Rings Protect Shaft
- Extended Service Life
- Preventing Installation Faults
- Cost Effective
- No Damage Due to Dusts Entered During Assembly
- Minimizing Time Loss Due to Easy Installation of Pre-Assembled Units
- Special Design Based on Customer Request

- **OPERATING RANGES**

- Shaft Diameter: $d_1=25...100$ mm
(Other Sizes on Request)
- Temperature: $t=-20...220$ °C
- Car/SiC Face material combination:
Pressure: $p_1=25$ bar
Sliding Velocity: $V_g=16$ m/s
- SiC/SiC ve TuC/SiC Face material combination:
Pressure: $p_1=12$ bar
Sliding Velocity: $V_g=10$ m/s
- Axial Movement: ± 1.0 mm, $d_1 \geq 75$ mm ± 1.5 mm

- **ROTEX-TN**

Tekli kartuş salmastra, basınçsız yıkama operasyonlarda kullanılır. Boğaz Ringli Modeldir.

- **ROTEX-TN**

It is a single type cartridge type seal used for operations with unpressurized quench with using throttle ring.

- **UYGULAMA ALANLARI**

Kimya ve Petrokimya Endüstrisi
Gıda ve İçecek Endüstrisi
Santrifüj Pompalar
Proses Pompalar

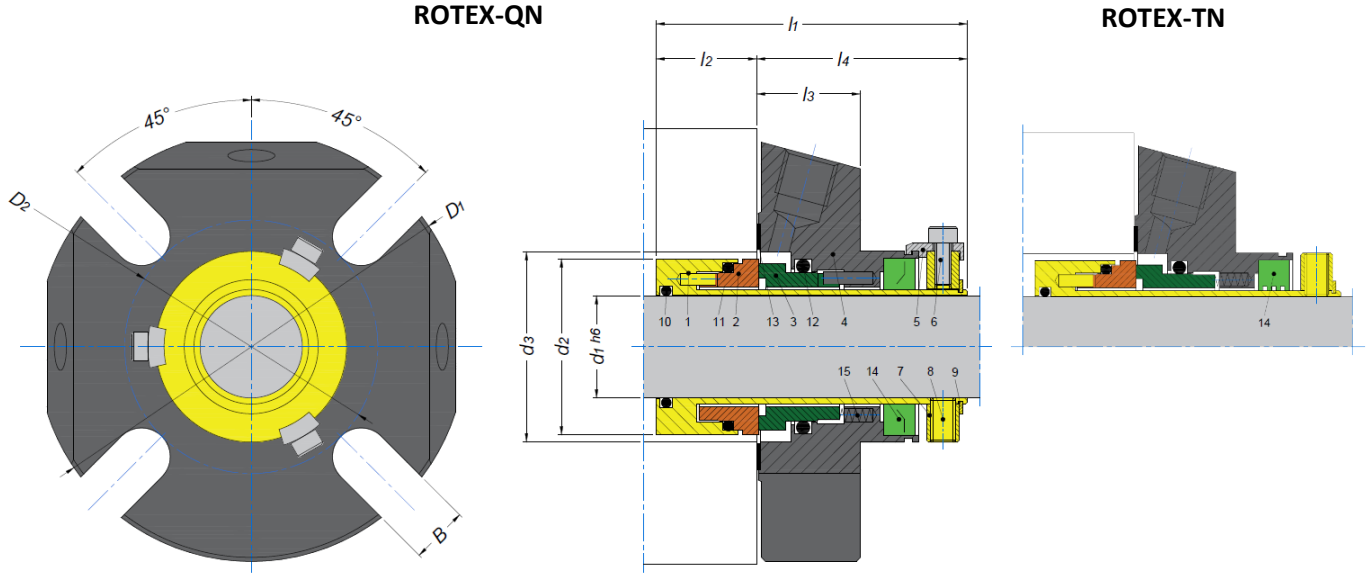
- **APPLICATION AREA**

*Chemical and Petrochemical Industry
Food and Beverage Industry
Centrifugal Pumps
Process Pumps*

Tıklayın & Güncel Kalın!

Click & Stay Updated!





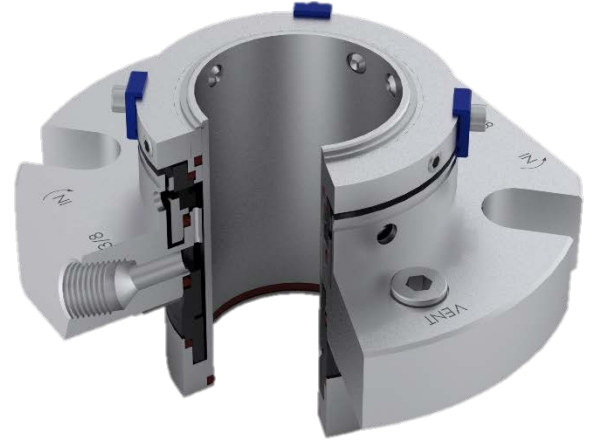
- | | |
|-------------------------------------|---|
| 1. Burç/Bush | 9. Segman/Snap Ring |
| 2. Döner Eleman/Seal Face | 10. O-ring |
| 3. Sabit Eleman/Stationary Seat | 11. O-ring |
| 4. Gövde/Cover | 12. O-ring |
| 5. Montaj Tırnağı /Assembly Fixture | 13. Conta/Gasket |
| 6. Civata / Screw | 14. Keçe (Rotex-TN Boğaz Ring) /Seal (Rotex-TN throttle ring) |
| 7. Sabitleme Bileziği /Drive Collar | 15. Yay /Spring |
| 8. Setskur/Set screw | |

ROTEX-QN ÖLÇÜ TABLOSU / DIMENSION TABLE										
d1	d2	d3 min	d3 max	l1	l2	l3	l4	D1	D2	B
25	43,0	44,0	51,5	79,5	26,1	25,4	53,4	105,0	62,0	13,2
28	46,0	47,0	52,0	79,5	26,1	25,4	53,4	105,0	62,0	13,2
30	48,0	49,0	56,0	79,5	26,1	25,4	53,4	105,0	65,0	13,2
32	49,8	51,0	57,0	79,5	26,1	25,4	53,4	108,0	67,0	13,2
33	49,8	51,0	57,0	79,5	26,1	25,4	53,4	108,0	67,0	13,2
35	53,0	54,0	61,5	79,5	26,1	25,4	53,4	113,0	70,0	13,2
38	56,0	57,0	66,0	79,5	26,1	25,4	53,4	123,0	75,0	13,2
40	58,0	59,0	68,0	79,5	26,1	25,4	53,4	123,0	75,0	14,2
42	60,5	61,5	69,5	79,5	26,1	25,4	53,4	133,0	80,0	14,2
43	60,5	61,5	70,5	79,5	26,1	25,4	53,4	133,0	80,0	14,2
45	62,5	64,0	73,0	79,5	26,1	25,4	53,4	138,0	81,0	14,2
48	65,6	67,0	75,0	79,5	26,1	25,4	53,4	138,0	84,0	14,2
50	68,0	69,0	78,0	79,5	26,1	25,4	53,4	148,0	87,0	14,2
53	72,0	73,0	87,0	79,5	26,1	25,4	53,4	148,0	97,0	18,0
55	73,0	74,0	83,0	79,5	26,1	25,4	53,4	148,0	90,0	18,0
60	78,0	79,0	91,0	79,5	26,1	25,4	53,4	157,0	102,0	18,0
65	84,8	85,7	98,5	79,5	26,1	25,4	53,4	163,0	109,0	18,0
70	93,0	95,0	108,0	79,5	26,1	25,4	53,4	178,0	118,0	18,0
75	100,0	101,6	118,0	98,0	34,1	28,0	63,9	190,0	129,0	18,0
80	106,4	108,0	124,0	98,0	34,1	28,0	63,9	195,0	135,0	18,0
85	109,5	111,1	128,0	98,0	34,1	28,0	63,9	198,0	139,0	22,0
90	115,9	117,5	135,0	98,0	34,1	28,0	63,9	205,0	145,0	22,0
95,0	119,1	120,7	138,0	98,0	34,1	28,0	63,9	208,0	148,0	22,0
100,0	125,4	127,0	144,0	98,0	34,1	28,0	63,9	218,0	154,0	22,0

Tıklayın & Güncel Kalın!

Click & Stay Updated!





• **ÖZELLİKLER**

- Çiftli Salmastra
- Kartuş tipi
- Balanslı
- Dönme Yönüne Bağımsız

• **AVANTAJLAR**

- Standart Pompa Proseslerinde İdeal Olarak Kullanılır
- Standardizasyon için İdeal Salmastralardır
- Uzun Ömürlü Kullanımlıdır
- Talep Üzerinde ATEX Sertifikası Verilebilir
- Kurulum ve Montaj Hataları Önlenir
- İşletme Maliyeti Düşüktür
- Kir ve Toz Montaj Sırasında Salmastraya Zarar Veremez
- Önceden Kurulu Salmastra Grubu Sayesinde Basit ve Kolay Kurulum Sağlar ve Montaj Sırasında Süre Kayıpları İndirgenmiş Olur
- Müşteriye Özel Tasarlanabilir Sistem

• **TECHNICAL FEATURES**

- Dual Seal
- Cartridge Type Seal
- Balanced
- Independent of Rotation Direction

• **ADVANTAGES**

- Ideal Seal for Standard Pump Processes
- An Ideal Seal For Standardizations
- Extended Service Life
- ATEX Certification Is Available on Request
- Preventing Installation Faults
- Cost Effective
- No Damage Due To Dusts Entered During Assembly
- Minimizing Time Loss Due To Easy Installation of Pre-Assembled Units
- Special Design Based on Customer Request

- **ÇALIŞMA LİMİTLERİ**

- Şaft Ölçüsü: $d_1=25...100$ mm
(Talep üzerinde diğer boyutlar yapılır)
- Sıcaklık: $t=-20...220$ °C
- Kar/SiC yüzey kombinasyonu için:
Basınç: $p_1=25$ bar
Çevresel Hız: $V_g=16$ m/s
- SiC/SiC ve TuC/SiC yüzey kombinasyonu için:
Basınç: $p_1=20$ bar
Çevresel Hız: $V_g=10$ m/s

- Soğutma Sıvısı Dolaşım Sistemi:

Basınç / Pressure : $P_3 = 25$ Bar
 $\Delta P (P_3 - P_1)_{ideal} = 2 \dots 3$ Bar

Yağlama Özellikleri Zayıf Olan Soğutma Sıvısında: 7 Bar

Pompa Çalışmaya Başlarken:

$\Delta P (P_3 - P_1)_{Max} = 25$ Bar

Eksenel Hareket: ± 1.0 mm $D_1 \geq 75$ mm ± 1.5

- **OPERATING RANGES**

- Shaft Diameter : $d_1=25...100$ mm
(Other Sizes on Request)
- Temperature: $t=-20...220$ °C
- Car/SiC Face material combination:
Pressure: $p_1=25$ bar
Sliding Velocity : $V_g=16$ m/s
- SiC/SiC ve TuC/SiC Face material combination:
Pressure: $p_1=20$ bar
Sliding Velocity: $V_g=10$ m/s

- Barrier Fluid Circulation System:

Pressure: $P_3 = 25$ Bar
 $\Delta P (P_3 - P_1)_{ideal} = 2 \dots 3$ Bar

For Barrier Media with Poor Lubrication properties: 7 Bar

Pump Startup:

$\Delta P (P_3 - P_1)_{Max} = 25$ Bar

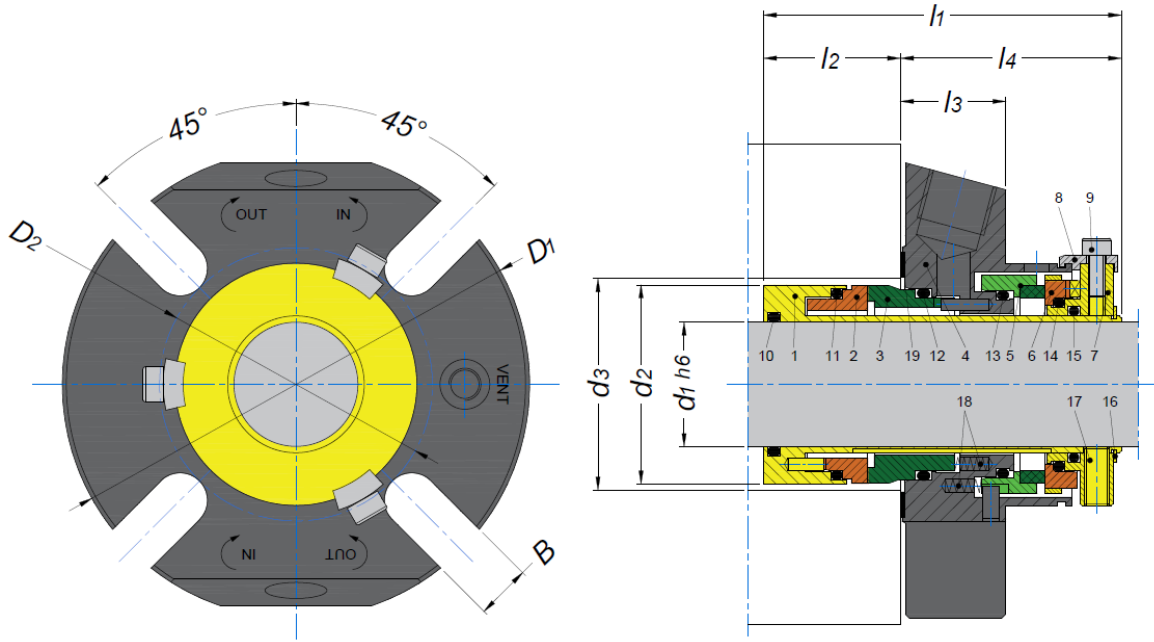
Axial Movement : ± 1.0 mm $D_1 \geq 75$ mm ± 1.5

- **UYGULAMA ALANLARI**

Kimya ve Petrokimya Endüstrisi
Gıda ve İçecek Endüstrisi
Santrifüj Pompalar
Proses Pompalar

- **APPLICATION AREA**

Chemical and Petrochemical Industry
Food and Beverage Industry
Centrifugal Pumps
Process Pumps



1. Burç/Bush
2. Döner Eleman/Seal Face
3. Sabit Eleman/Stationary Seat
4. Gövde/Cover
5. Montaj Tırnağı /Assembly Fixture
6. Civata / Screw
7. Sabitleme Bileziği /Drive Collar

8. Setskur/Set screw
9. Segman/Snap Ring
10. O-ring
11. O-ring
12. O-ring
13. Conta/Gasket
14. Yay/Spring

ROTEX-DN ÖLÇÜ TABLOSU/DIMENSION TABLE										
d1	d2	d3 min	d3 max	l1	l2	l3	l4	D1	D2	B
25	43,0	44,0	51,5	86,5	33,1	25,4	53,4	105,0	62,0	13,2
28	46,0	47,0	52,0	86,5	33,1	25,4	53,4	105,0	62,0	13,2
30	48,0	49,0	56,0	86,5	33,1	25,4	53,4	105,0	65,0	13,2
32	49,8	51,0	57,0	86,5	33,1	25,4	53,4	108,0	67,0	13,2
33	49,8	51,0	57,0	86,5	33,1	25,4	53,4	108,0	67,0	13,2
35	53,0	54,0	61,5	86,5	33,1	25,4	53,4	113,0	70,0	13,2
38	56,0	57,0	66,0	86,5	33,1	25,4	53,4	123,0	75,0	13,2
40	58,0	59,0	68,0	86,5	33,1	25,4	53,4	123,0	75,0	14,2
42	60,5	61,5	69,5	86,5	33,1	25,4	53,4	133,0	80,0	14,2
43	60,5	61,5	70,5	86,5	33,1	25,4	53,4	133,0	80,0	14,2
45	62,5	64,0	73,0	86,5	33,1	25,4	53,4	138,0	81,0	14,2
48	65,6	67,0	75,0	86,5	33,1	25,4	53,4	138,0	84,0	14,2
50	68,0	69,0	78,0	86,5	33,1	25,4	53,4	148,0	87,0	14,2
53	72,0	73,0	87,0	86,5	33,1	25,4	53,4	148,0	97,0	18,0
55	73,0	74,0	83,0	86,5	33,1	25,4	53,4	148,0	90,0	18,0
60	78,0	79,0	91,0	86,5	33,1	25,4	53,4	157,0	102,0	18,0
65	84,8	85,7	98,5	86,5	33,1	25,4	53,4	163,0	109,0	18,0
70	93,0	95,0	108,0	86,5	33,1	25,4	53,4	178,0	118,0	18,0
75	100,0	101,6	118,0	108,0	44,1	28,0	63,9	190,0	129,0	18,0
80	106,4	108,0	124,0	108,0	44,1	28,0	63,9	195,0	135,0	18,0
85	109,5	111,1	128,0	108,0	44,1	28,0	63,9	198,0	139,0	22,0
90	115,9	117,5	135,0	108,0	44,1	28,0	63,9	205,0	145,0	22,0
95	119,1	120,7	138,0	108,0	44,1	28,0	63,9	208,0	148,0	22,0
100	125,4	127,0	144,0	108,0	44,1	28,0	63,9	218,0	154,0	22,0

Tıklayın & Güncel Kalın!

Click & Stay Updated!





• **ÖZELLİKLER**

- Üstten Tahrikli Ekipmanlar için Kullanılır
- Tekli Salmastra
- Balanslı
- Dönme Yönüne Bağımsız
- Kuru Çalışır

• **AVANTAJLAR**

- Komponent veya Kartuş Olarak Uygulanabilir
- Ters Basınca Uygun
- Uzun Ömürlü Kullanımlıdır
- İşletme Maliyeti Düşüktür
- Önceden Kurulu Salmastra Grubu Sayesinde Basit ve Kolay Kurulum Sağlar ve Montaj Sırası Süre Kayıpları İndirgenmiş Olur

• **ÇALIŞMA LİMİTLERİ**

- Şaft Ölçüsü: $d_1=25...160$ mm
- Sıcaklık: $t=-20...150$ °C
- Basınç: $p_1=\text{Vakum}...6$ bar
- Çevresel Hız: $V_g=0...2$ m/s
- Eksenel Hareket: ± 1.5 mm
- Radyal Hareket: ± 1.5 mm

• **TECHNICAL FEATURES**

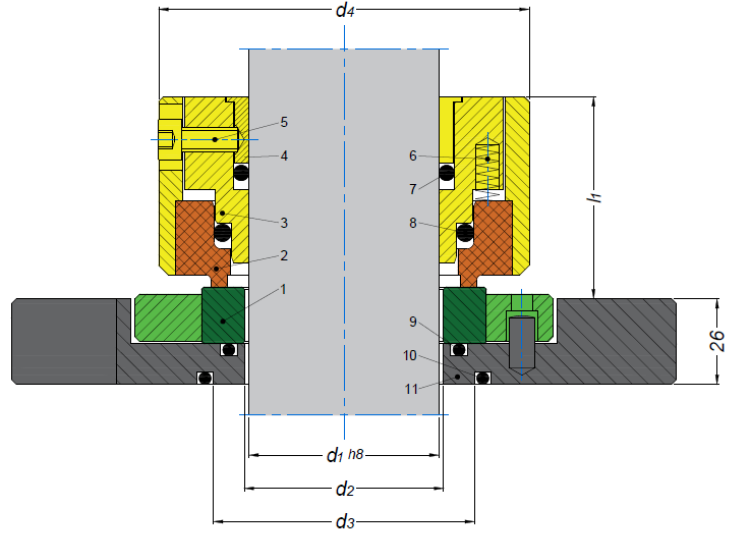
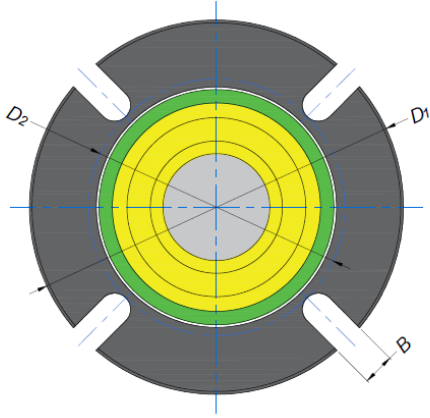
- Used for Top Entry Drives
- Single Seal
- Balanced
- Independent of Rotation Direction
- Dry-running

• **ADVANTAGES**

- Available as Components or Cartridge Units
- Suitable for Pressure Reversals
- Extended Service Life
- Cost Effective
- Minimizing Time Loss Due to Easy Installation of Pre-Assembled Units

• **OPERATING RANGES**

- Shaft Diameter : $d_1=25...160$ mm
- Temperature: $t=-20...150$ °C
- Pressure: $p_1=\text{Vaccum}...6$ bar
- Sliding Velocity: $V_g=0...2$ m/s
- Axial Movement: ± 1.5 mm
- Radial Movement: ± 1.5 mm



- 1.Sabit Eleman/*Stationary Seat*
- 2.Döner Eleman/*Rotary Seal*
- 3.Sabitleme Bileziği/*Drive Collar*
- 4.Sıkma Bileziği/*Clamping Ring*

- 5.Civata/*Screw*
- 6.Yay/*Spring*
- 7,8,9,10.O-Ring
- 11.Flanş/*Flange*

RT-SX ÖLÇÜ TABLOSU/DIMENSION TABLE

d1	d2	d3	d4	l1	D1	D2	B
25	34,0	55,0	68,0	41,5	148,0	89,0	11,0
28	34,0	55,0	68,0	41,5	148,0	89,0	11,0
30	34,0	55,0	68,0	41,5	148,0	89,0	11,0
32	39,0	60,0	73,0	41,5	153,0	94,0	11,0
35	39,0	60,0	73,0	41,5	153,0	94,0	11,0
38	44,0	65,0	78,0	41,5	158,0	99,0	11,0
40	44,0	65,0	78,0	41,5	158,0	99,0	11,0
45	49,0	68,0	83,0	41,5	163,0	104,0	11,0
48	54,0	73,0	88,0	41,5	178,0	111,0	14,0
50	54,0	73,0	88,0	41,5	178,0	111,0	14,0
55	59,0	78,0	93,0	41,5	183,0	116,0	14,0
60	59,0	85,0	98,0	41,5	188,0	121,0	14,0
65	64,0	90,0	103,0	44,5	193,0	126,0	14,0
70	74,0	95,0	108,0	44,5	198,0	131,0	14,0
75	79,0	100,0	113,0	44,5	203,0	136,0	14,0
80	84,0	105,0	118,0	44,5	208,0	141,0	14,0
85	89,0	110,0	123,0	44,5	213,0	146,0	14,0
90	94,0	115,0	128,0	44,5	218,0	151,0	14,0
95	99,0	120,0	133,0	44,5	223,0	156,0	14,0
100	104,0	125,0	138,0	44,5	228,0	161,0	14,0
105	109,0	130,0	143,0	44,5	233,0	166,0	14,0
110	114,0	135,0	148,0	44,5	238,0	171,0	14,0
115	119,0	140,0	153,0	44,5	267,0	178,0	18,0
125	129,0	150,0	163,0	44,5	277,0	188,0	18,0
140	144	165	178	44,5	297	203	18,0
150	154	175	188	44,5	307	213	18,0
160	164	185	198	44,5	317	223	18,0

Tıklayın & Güncel Kalın!

Click & Stay Updated!



SIZDIRMAZLIKTA MÜKEMMELLİK, TÜRKİYE'DE LİDERLİK





• **ÖZELLİKLER**

- Tekli Salmastra
- Üstten Tahrikli Ekipmanlar için
- Balanssız
- Dönme Yönüne Bağımsız
- Sıvı Yağlama
- Kartuş Ünitesi

• **AVANTAJLAR**

- Standardizasyon için İdeal Salmastralardır
- Rulmansız veya Rulmanlı Olabilir
- Talep Üzerinde ATEX Sertifikası Verilebilir
- Ters Basıncıta Kendinden Kapanma Özeliğine Sahiptir
- Fabrikada Toplanmış ve Test Edilmiş Ürünlerdir.

• **ÇALIŞMA LİMİTLERİ**

- Şaft Ölçüsü: $d_1=40...220$ mm
- Sıcaklık: $t=-20...200$ °C (-80...350 °C)
- Basıncı: $p_1=$ Vakum...6 bar
- Çevresel Hız: $V_g=2$ m/s (5 m/s)

• **TECHNICAL FEATURES**

- Single Seal
- Used for Top Entry Drives
- Unbalanced
- Independent of Rotation Direction
- Liquid-lubricated
- Cartridge Unit

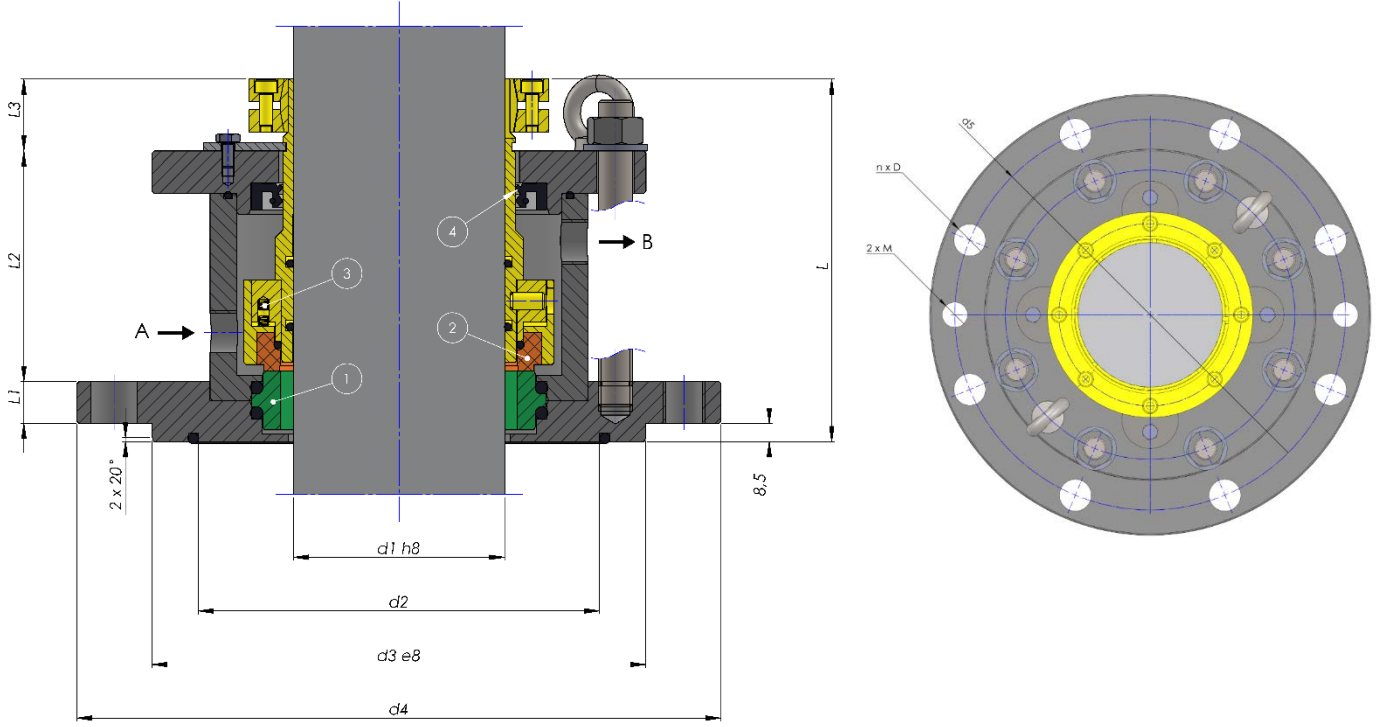
• **ADVANTAGES**

- An Ideal Seal for Standardizations
- Available With or Without Bearing
- ATEX Certification Is Available on Request
- Self-Closing at Pressure Reversal
- Units Installed and Tested in Factory

• **OPERATING RANGES**

- Shaft Diameter: $d_1=40...220$ mm
- Temperature: $t=-30...220$ °C (-80...350 °C)
- Pressure: $p_1=$ Vacuum ...6 bar
- Sliding Velocity: $V_g=2$ m/s (5 m/s)

RTR100-S



- 1.Sabit Eleman/*Stationary Seat*
- 2.Döner Eleman/*Rotary Seal*
- 3.Yay/*Spring*
- 4.Keçe/*Lip Seal*

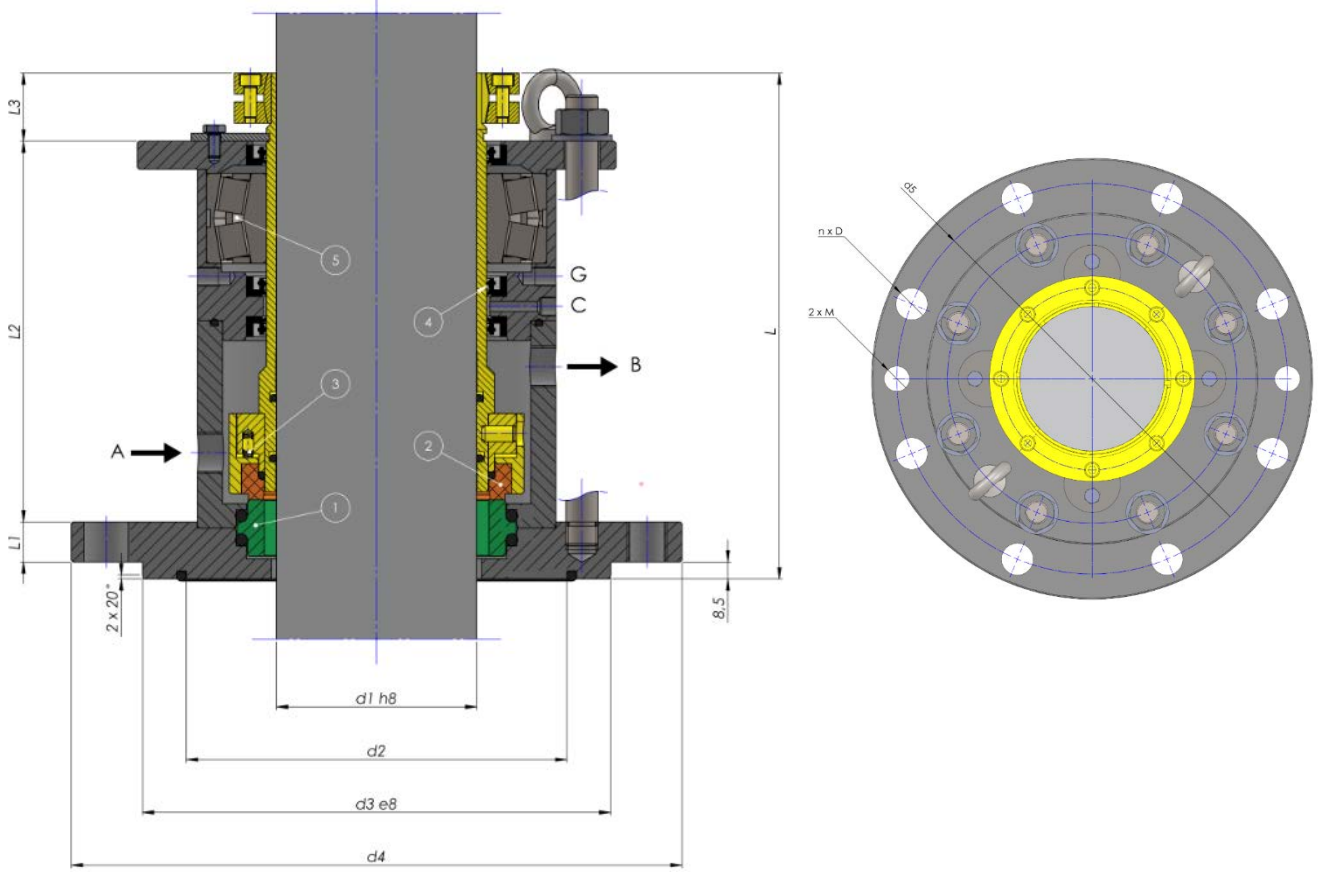
RTR100-S ÖLÇÜ TABLOSU / DIMENSION TABLE										
d1	d2	d3	d4	d5	n x D	L	L1	L2	L3	A , B
40	90,0	110,0	175,0	145,0	4 x 18	130,0	15,0	87,0	28,0	G 3/8
50	135,0	176,0	240,0	210,0	8 x 18	134,0	17,0	89,0	28,0	G 3/8
60	135,0	176,0	240,0	210,0	8 x 18	138,5	17,0	93,5	28,0	G 3/8
80	155,0	204,0	275,0	240,0	8 x 22	158,5	20,0	104,5	34,0	G 1/2
100	190,0	234,0	305,0	270,0	8 x 22	163,0	20,0	109,0	34,0	G 1/2
125	215,0	260,0	330,0	295,0	8 x 22	170,0	20,0	110,0	40,0	G 1/2
140	250,0	313,0	395,0	350,0	12 x 22	184,0	20,0	124,0	40,0	G 1/2
160	265,0	313,0	395,0	350,0	12 x 22	192,5	25,0	127,5	40,0	G 1/2
180	310,0	364,0	445,0	400,0	12 x 22	202,5	25,0	132,5	45,0	G 1/2
200	310,0	364,0	445,0	400,0	12 x 22	207,5	25,0	137,5	45,0	G 1/2
220	340,0	422,0	505,0	460,0	16 x 22	224,5	25,0	149,5	50,0	G 1/2

Tıklayın & Güncel Kalın!

Click & Stay Updated!



RTR100-SB



1. Sabit Eleman/*Stationary Seal*
 2. Döner Eleman/*Rotary Seal*
 3. Yay/*Spring*

4. Keçe/*Lip Seal*
 5. Rulman/*Bearing*

RTR100-SB ÖLÇÜ TABLOSU/DIMENSION TABLE										
d1	d2	d3	d4	d5	n x D	L	L1	L2	L3	A, B
40	90,0	110,0	175,0	145,0	4 x 18	179,0	15,0	136,0	28,0	G 3/8
50	135,0	176,0	240,0	210,0	8 x 18	194,0	17,0	149,0	28,0	G 3/8
60	135,0	176,0	240,0	210,0	8 x 18	201,0	17,0	156,0	28,0	G 3/8
80	155,0	204,0	275,0	240,0	8 x 22	243,0	20,0	189,0	34,0	G 1/2
100	190,0	234,0	305,0	270,0	8 x 22	244,0	20,0	190,0	34,0	G 1/2
125	215,0	260,0	330,0	295,0	8 x 22	265,0	20,0	205,0	40,0	G 1/2
140	250,0	313,0	395,0	350,0	12 x 22	282,0	20,0	222,0	40,0	G 1/2
160	265,0	313,0	395,0	350,0	12 x 22	284,5	25,0	219,5	40,0	G 1/2
180	310,0	364,0	445,0	400,0	12 x 22	300,0	25,0	230,0	45,0	G 1/2
200	310,0	364,0	445,0	400,0	12 x 22	307,5	25,0	237,5	45,0	G 1/2
220	340,0	422,0	505,0	460,0	16 x 22	324,5	25,0	249,5	50,0	G 1/2

Tıklayın & Güncel Kalın!

Click & Stay Updated!





• **ÖZELLİKLER**

- Çift Salmastra
- Üstten Tahrikli Ekipmanlar için
- Balanssız
- Dönme Yönüne Bağımsız
- Sıvı Yağlama
- Kartuş Ünitesi

• **AVANTAJLAR**

- Standardizasyon için İdeal Salmastralardır
- Rulmansız ve Rulmanlı Olabilir
- Talep Üzerinde ATEX Sertifikası Verilebilir
- Ters Basıncıta Kendinden Kapanma Özeliğe Sahiptir
- Fabrikada Toplanmış ve Test Edilmiş Ürünler

• **ÇALIŞMA LİMİTLERİ**

- Şaft Ölçüsü: $d_1=40...220$ mm
- Sıcaklık: $t=-20...200$ °C (-80...+350 °C)
- Basıncı: $p_1=$ Vakum...16 bar
- Çevresel Hız: $V_g=2$ m/s (5 m/s)

• **TECHNICAL FEATURES**

- Double Seal
- Used for Top Entry Drives
- Unbalanced
- Independent of Rotation Direction
- Liquid-lubricated
- Cartridge Unit

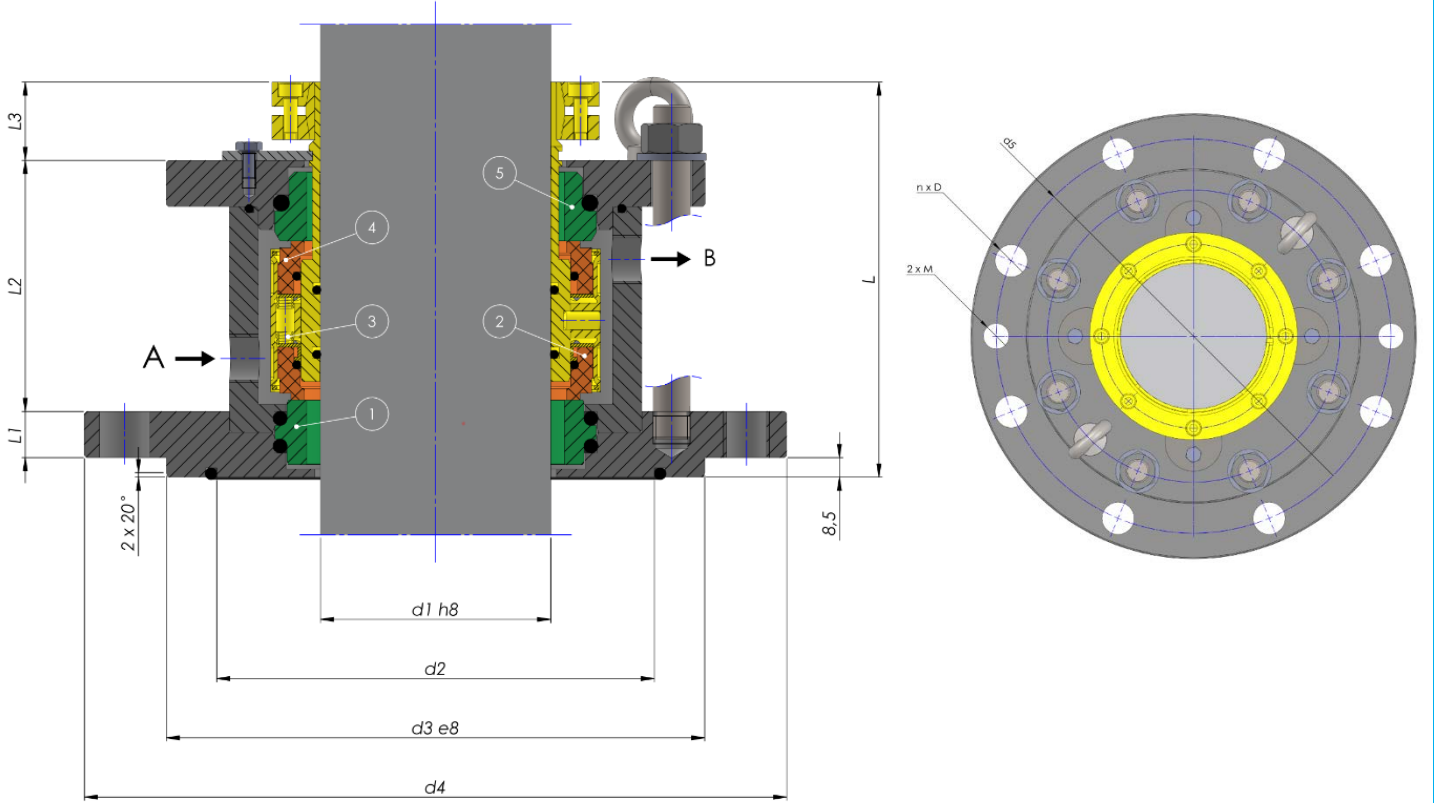
• **ADVANTAGES**

- An Ideal Seal For Standardizations
- Available With or Without Bearing
- ATEX Certification Is Available on Request
- Self-Closing at Pressure Reversal
- Units Installed and Tested in Factory

• **OPERATING RANGES**

- Shaft Diameter: $d_1=40...220$ mm
- Temperature: $t=-20...200$ °C (-80...+350 °C)
- Pressure: $p_1=$ Vacuum...16 bar
- Sliding Velocity: $V_g=2$ m/s (5 m/s)

RTR100-D



- 1.Sabit Eleman/*Stationary Seat*
- 2.Döner Eleman/*Rotary Seal*
- 3.Yay/*Spring*
- 4.Atm.Döner Eleman/*Atm.Rotary Seal*
- 5.Atm.Stationary Seat/*Atm.Stationary Seat*

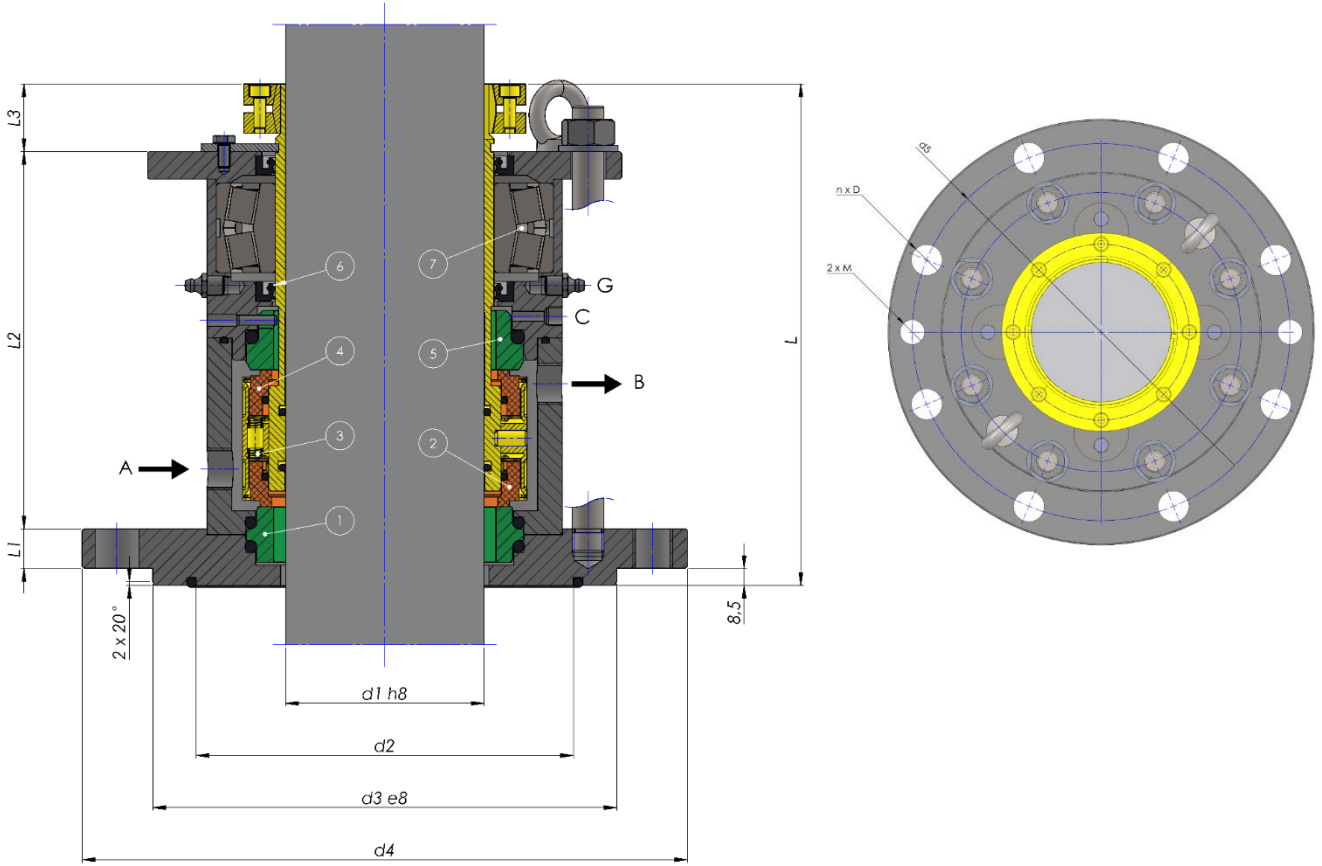
RTR100-D ÖLÇÜ TABLOSU / DIMENSION TABLE										
d1	d2	d3	d4	d5	n x D	L	L1	L2	L3	A , B
40	90,0	110,0	175,0	145,0	4 x 18	130,0	15,0	87,0	28,0	G 3/8
50	135,0	176,0	240,0	210,0	8 x 18	134,0	17,0	89,0	28,0	G 3/8
60	135,0	176,0	240,0	210,0	8 x 18	138,5	17,0	93,5	28,0	G 3/8
80	155,0	204,0	275,0	240,0	8 x 22	158,5	20,0	104,5	34,0	G 1/2
100	190,0	234,0	305,0	270,0	8 x 22	163,0	20,0	109,0	34,0	G 1/2
125	215,0	260,0	330,0	295,0	8 x 22	170,0	20,0	110,0	40,0	G 1/2
140	250,0	313,0	395,0	350,0	12 x 22	184,0	20,0	124,0	40,0	G 1/2
160	265,0	313,0	395,0	350,0	12 x 22	192,5	25,0	127,5	40,0	G 1/2
180	310,0	364,0	445,0	400,0	12 x 22	202,5	25,0	132,5	45,0	G 1/2
200	310,0	364,0	445,0	400,0	12 x 22	207,5	25,0	137,5	45,0	G 1/2
220	340,0	422,0	505,0	460,0	16 x 22	224,5	25,0	149,5	50,0	G 1/2

Tıklayın & Güncel Kalın!

Click & Stay Updated!



RTR100-DB



- 1.Sabit Eleman/*Stationary Seat*
- 2.Döner Eleman/*Rotary Seal*
- 3.Yay/*Spring*
- 4.Atm.Döner Eleman/*Atm.Rotary Seal*
- 5.Atm.Stationary Seat/*Atm.Stationary Seat*

- 6.Keçe/*Lip Seal*
- 7.Rulman/*Bearing*

RTR100-DB ÖLÇÜ TABLOSU/DIMENSION TABLE										
d1	d2	d3	d4	d5	n x D	L	L1	L2	L3	A , B
40	90,0	110,0	175,0	145,0	4 x 18	179,0	15,0	136,0	28,0	G 3/8
50	135,0	176,0	240,0	210,0	8 x 18	194,0	17,0	149,0	28,0	G 3/8
60	135,0	176,0	240,0	210,0	8 x 18	201,0	17,0	156,0	28,0	G 3/8
80	155,0	204,0	275,0	240,0	8 x 22	243,0	20,0	189,0	34,0	G 1/2
100	190,0	234,0	305,0	270,0	8 x 22	244,0	20,0	190,0	34,0	G 1/2
125	215,0	260,0	330,0	295,0	8 x 22	265,0	20,0	205,0	40,0	G 1/2
140	250,0	313,0	395,0	350,0	12 x 22	282,0	20,0	222,0	40,0	G 1/2
160	265,0	313,0	395,0	350,0	12 x 22	284,5	25,0	219,5	40,0	G 1/2
180	310,0	364,0	445,0	400,0	12 x 22	300,0	25,0	230,0	45,0	G 1/2
200	310,0	364,0	445,0	400,0	12 x 22	307,5	25,0	237,5	45,0	G 1/2
220	340,0	422,0	505,0	460,0	16 x 22	324,5	25,0	249,5	50,0	G 1/2

Tıklayın & Güncel Kalın!

Click & Stay Updated!





• **ÖZELLİKLER**

- Tekli Salmastra
- Üst, Yan ve Alt Tahrikli Ekipmanlar için
- Balanssız
- Dönme Yönüne Bağımsız
- Sıvı Yağlama
- Kartuş Ünitesi

• **AVANTAJLAR**

- Standardizasyon için İdeal Salmastralardır
- Rulmansız veya Rulmanlı Olabilir
- Talep Üzerinde ATEX Sertifikası Verilebilir
- Kullanılan malzemeler FDA'nın tüm yönergelerine uygundur.
- Hijyenik uygulamalar için uygun bir konfigürasyon mevcuttur.
- CIP (Yerinde Temizlik) ve SIP (Yerinde Sterilizasyon)
- Fabrikada Toplanmış ve Test Edilmiş Ürünlerdir.

• **ÇALIŞMA LİMİTLERİ**

- Şaft Ölçüsü: $d_1=20...150$ mm
- Sıcaklık: $t=-20...180^{\circ}C$
- Basınç: $p_1=$ Vakum...6 bar
- Çevresel Hız: $V_g=5$ m/s
- Eksenel hareket:
 $d_1 = 25...60$ mm max. ± 1 mm
 $d_1 = 70...150$ mm max. $\pm 1,5$ mm
- Bu Limitlerin Dışındaki Uygulamalar için Bizimle İletişime Geçin.

• **TECHNICAL FEATURES**

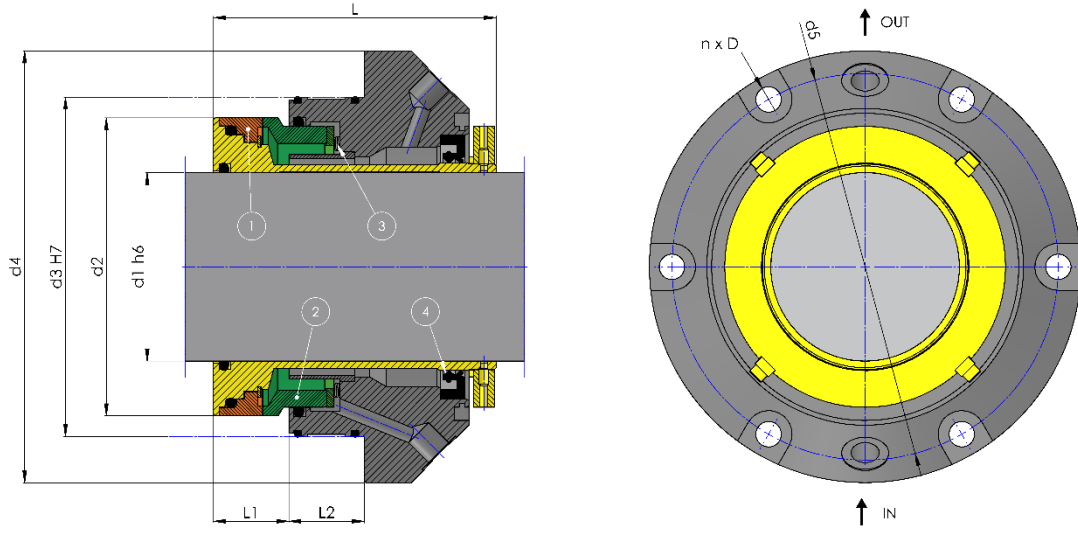
- Single Seal
- For Top, Side, and Bottom-Driven equipment.
- Unbalanced
- Independent of Rotation Direction
- Liquid-lubricated
- Cartridge Unit

• **ADVANTAGES**

- An Ideal Seal for Standardizations
- Available With or Without Bearing
- ATEX Certification Is Available on Request
- Used Materials Meets All of the FDA's Guidelines.
- A Configuration Suitable for Hygienic Applications is Available.
- CIP (Clean-in-place) and SIP (Sterilization-in-place)
- Units Installed and Tested in Factory.

• **OPERATING RANGES**

- Shaft Diameter: $d_1=25...150$ mm
- Temperature: $t=-20...180^{\circ}C$
- Pressure: $p_1=$ Vacuum ...6 bar
- Sliding Velocity: $V_g=5$ m/s
- Axial Movement:
 $d_1 = 25...60$ mm max. ± 1 mm
 $d_1 = 70...150$ mm max. $\pm 1,5$ mm
- Contact us for Applications Outside of This Limits.



RTR200-S

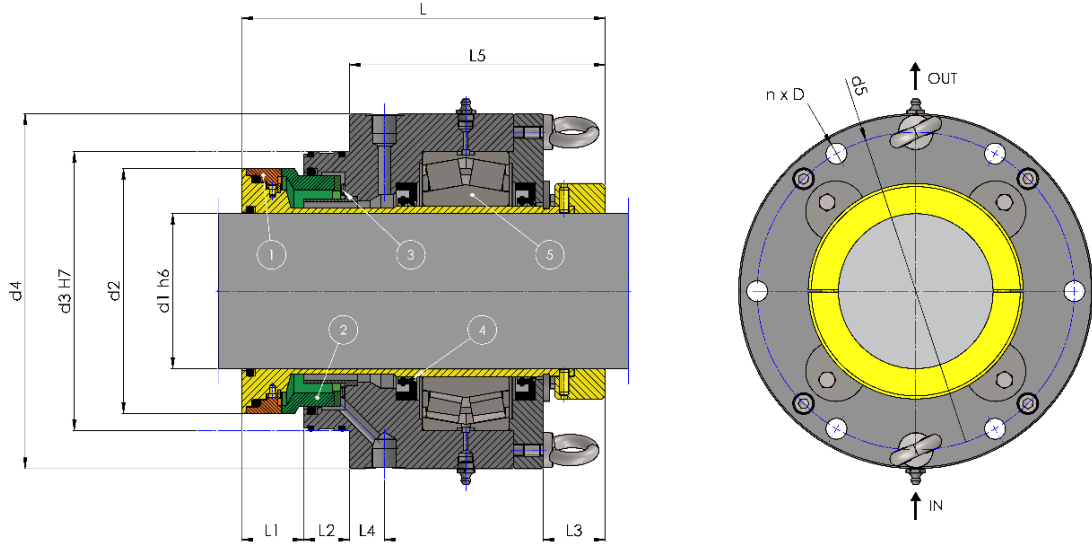
1. Döner Eleman Ürün Taraf/Rotary Seal Product Side
2. Sabit Eleman Ürün Taraf/Stationary Seat Product Side
3. Yay/Spring
4. Keçe/Lip Seal

RTR200-S ÖLÇÜ TABLOSU/DIMENSION TABLE								
d1	d2	d3	d4	d5	n x D	L	L1	L2
25	54,5	80	110	95	4 x M8	85	25	20
30	59,5	82	120	100	4 x M8	85	25	20
35	72	95	130	110	4 x M8	90	30	20
40	77	105	140	120	6 x M10	100	30	25
45	82	110	150	130	6 x M10	100	30	25
50	95	115	155	135	6 x M10	100	30	25
60	108	130	170	150	6 x M10	110	35	25
70	121	150	200	170	6 x M12	120	40	30
70	121	150	210	185	6 x M12	120	40	30
90	146	172	220	190	6 x M12	140	40	40
100	158	180	230	205	6 x M12	150	40	40
110	170	210	260	230	8 x M12	160	40	40
120	183	220	270	240	8 x M12	160	40	40
130	198	230	285	255	8 x M12	160	50	40
140	208	280	350	310	8 x M16	170	50	40
150	218	290	360	320	8 x M16	170	50	40

Tıklayın & Güncel Kalın!

Click & Stay Updated!





RTR200-SB

1. Döner Eleman Ürün Taraf/*Rotary Seal Product Side*
2. Sabit Eleman Ürün Taraf/*Stationary Seat Product Side*
3. Yay/*Spring*
4. Keçe/*Lip Seal*
5. Rulman/*Bearing*

RTR200-SB ÖLÇÜ TABLOSU/DIMENSION TABLE											
d1	d2	d3	d4	d5	n x D	L	L1	L2	L3	L4	L5
25	54,5	80	110	95	4 x M8	140	25	20	30	15	95
30	59,5	82	120	100	4 x M8	140	25	20	30	15	95
35	72	95	130	110	4 x M8	150	30	20	30	15	100
40	77	105	140	120	6 x M10	160	30	25	30	20	105
45	82	110	150	130	6 x M10	170	30	25	35	20	115
50	95	115	155	135	6 x M10	170	30	25	35	20	115
60	108	130	170	150	6 x M10	180	35	25	35	20	120
70	121	150	200	170	6 x M12	205	40	30	40	22,5	135
80	134	160	210	185	6 x M12	215	40	30	40	22,5	145
90	146	172	220	190	6 x M12	225	40	30	40	22,5	155
100	158	180	230	205	6 x M12	235	40	30	40	22,5	165
110	170	210	260	230	8 x M12	255	40	40	40	25	175
120	183	220	270	240	8 x M12	260	40	40	40	25	180
130	198	230	285	255	8 x M12	275,001	50,001	40	45	25	185
140	208	280	350	310	8 x M16	300	50	40	45	30	210
150	218	290	360	320	8 x M16	310	50	40	47	30	220

Tıklayın & Güncel Kalın!

Click & Stay Updated!





• **ÖZELLİKLER**

- Tekli Salmastra
- Üst, Yan ve Alt Tahrikli Ekipmanlar için
- Balanssız
- Dönme Yönüne Bağımsız
- Sıvı Yağlama
- Kartuş Ünitesi

• **AVANTAJLAR**

- Standardizasyon için İdeal Salmastralardır
- Rulmansız veya Rulmanlı Olabilir
- Talep Üzerinde ATEX Sertifikası Verilebilir
- Kullanılan malzemeler FDA'nın tüm yönergelerine uygundur.
- Hijyenik uygulamalar için uygun bir konfigürasyon mevcuttur.
- CIP (Yerinde Temizlik) ve SIP (Yerinde Sterilizasyon)
- Fabrikada Toplanmış ve Test Edilmiş Ürünlerdir.

• **ÇALIŞMA LİMİTLERİ**

- Şaft Ölçüsü: $d_1=20...150$ mm
- Sıcaklık: $t=-20...180^{\circ}\text{C}$
- Basınç: $p_1=\text{Vakum}...6$ bar
- Çevresel Hız: $V_g=5$ m/s
- Eksenel hareket:
 $d_1 = 25...60$ mm max. ± 1 mm
 $d_1 = 70...150$ mm max. $\pm 1,5$ mm
- Bu Limitlerin Dışındaki Uygulamalar için Bizimle İletişime Geçin.

• **TECHNICAL FEATURES**

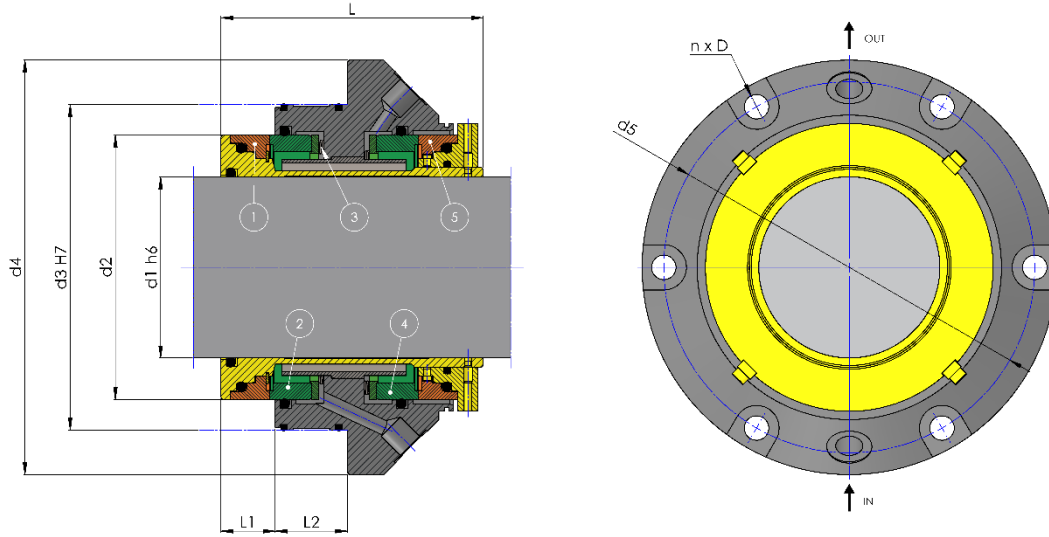
- Single Seal
- For Top, Side, and Bottom-Driven equipment.
- Unbalanced
- Independent of Rotation Direction
- Liquid-lubricated
- Cartridge Unit

• **ADVANTAGES**

- An Ideal Seal for Standardizations
- Available With or Without Bearing
- ATEX Certification Is Available on Request
- Used Materials Meets All of the FDA's Guidelines.
- A Configuration Suitable for Hygienic Applications is Available.
- CIP (Clean-in-place) and SIP (Sterilization-in-place)
- Units Installed and Tested in Factory.

• **OPERATING RANGES**

- Shaft Diameter: $d_1=25...150$ mm
- Temperature: $t=-20...180^{\circ}\text{C}$
- Pressure: $p_1= \text{Vacuum} ...6$ bar
- Sliding Velocity: $V_g=5$ m/s
- Axial Movement:
 $d_1 = 25...60$ mm max. ± 1 mm
 $d_1 = 70...150$ mm max. $\pm 1,5$ mm
- Contact us for Applications Outside of This Limits.



RTR200-D

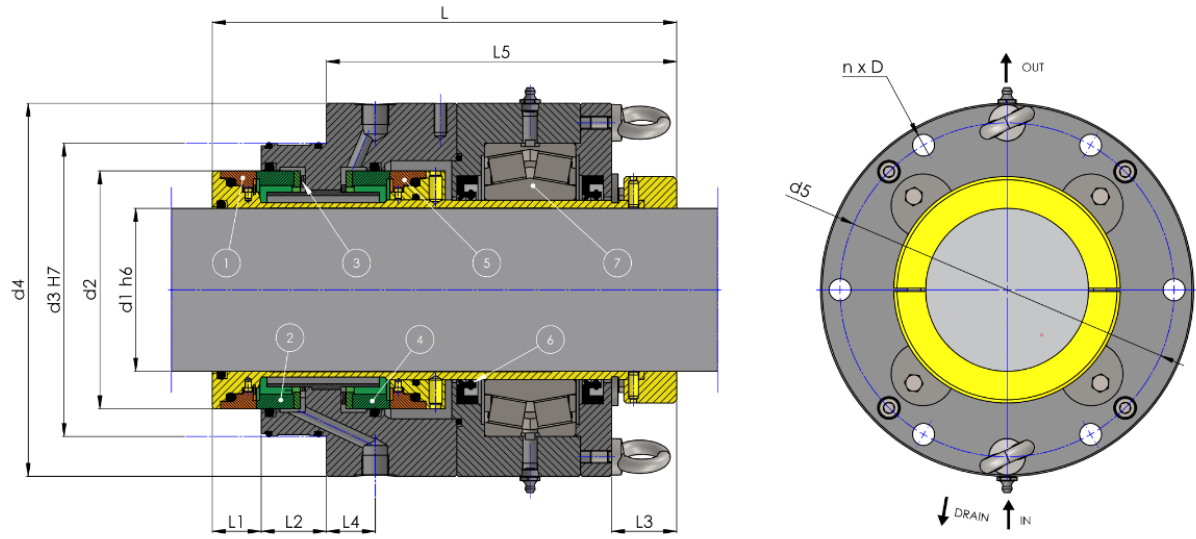
1. Döner Eleman Ürün Taraf/*Rotary Seal Product Side*
2. Sabit Eleman Ürün Taraf/*Stationary Seat Product Side*
3. Yay/*Spring*
4. Sabit Eleman Atm. Taraf/*Stationary Seat Atmosphere Side*
5. Döner Eleman Atm. Taraf/*Rotary Seal Atmosphere Side*

RTR200-D ÖLÇÜ TABLOSU/DIMENSION TABLE								
d1	d2	d3	d4	d5	n x D	L	L1	L2
25	49,5	80	110	95	4 x M8	87	20	20
30	54,5	82	120	100	4 x M8	87	20	20
35	59,5	95	130	110	4 x M8	87	20	20
40	72	105	140	120	6 x M10	100	20	25
45	77	110	150	130	6 x M10	100	20	25
50	82	115	155	135	6 x M10	100	20	25
60	95	130	170	150	6 x M10	100	20	25
70	108	150	200	170	6 x M12	145	30	30
80	121	160	210	185	6 x M12	145	30	30
90	134	172	220	190	6 x M12	145	30	40
100	146	180	230	205	6 x M12	145	30	40
110	158	210	260	230	8 x M12	155	35	40
120	170	220	270	240	8 x M12	155	35	40
130	183	230	285	255	8 x M12	155	35	40
140	198	280	350	310	8 x M16	167	40	40
150	208	290	360	320	8 x M16	167	40	40

Tıklayın & Güncel Kalın!

Click & Stay Updated!





RTR200-DB

1. Döner Eleman Ürün Taraf/*Rotary Seal Product Side*
2. Sabit Eleman Ürün Taraf/*Stationary Seat Product Side*
3. Yay/*Spring*
4. Sabit Eleman Atm. Taraf/*Stationary Seat Atmosphere Side*
5. Döner Eleman Atm. Taraf/*Rotary Seal Atmosphere Side*
6. Keçe/*Lip Seal*
7. Rulman/*Bearing*

RTR200-DB ÖLÇÜ TABLOSU/DIMENSION TABLE											
d1	d2	d3	d4	d5	n x D	L	L1	L2	L3	L4	L5
25	49,5	80	110	95	4 x M8	165	20	20	30	20	125
30	54,5	82	120	100	4 x M8	165	20	20	30	22,5	125
35	59,5	95	130	110	4 x M8	170	20	20	30	22	130
40	72	105	140	120	6 x M10	180	20	25	30	23	135
45	77	110	150	130	6 x M10	190	20	25	35	25	145
50	82	115	155	135	6 x M10	190	20	25	35	25	145
60	95	130	170	150	6 x M10	195	20	25	35	20	150
70	108	150	200	170	6 x M12	255	30	30	40	40	195
80	121	160	210	185	6 x M12	265	30	30	40	40	205
90	134	172	220	190	6 x M12	275	30	40	40	30	205
100	146	180	230	205	6 x M12	285	30	40	40	30	215
110	158	210	260	230	8 x M12	300	35	40	40	45	225
120	170	220	270	240	8 x M12	305	35	40	40	45	230
130	183	230	285	255	8 x M12	310	35	40	45	45	235
140	198	280	350	310	8 x M16	340	40	50	45	35	250
150	208	290	360	320	8 x M16	350	40	50	47	35	260

Tıklayın & Güncel Kalın!

Click & Stay Updated!





• **ÖZELLİKLER**

- Çift Salmastra
- Üstten, Yandan ve Alttan Tahrikli Ekipmanlar için Balanssız
- Dönme Yönüne Bağımsız
- Flanş Soğutmalı
- Kartuş Ünitesi

• **AVANTAJLAR**

- Standardizasyon için İdeal Salmastralardır
- Rulmansız veya Rulmanlı Olabilir
- Fabrikada Toplanmış ve Test Edilmiş Ürünlerdir.

• **ÇALIŞMA LİMİTLERİ**

- Şaft Ölçüsü: $d_1=20...200$ mm
- Sıcaklık: $t=-20...200$ °C
- Basınç: $p_1=14$ bar (23 bar)
- Çevresel Hız: $V_g=10$ m/s

• **TECHNICAL FEATURES**

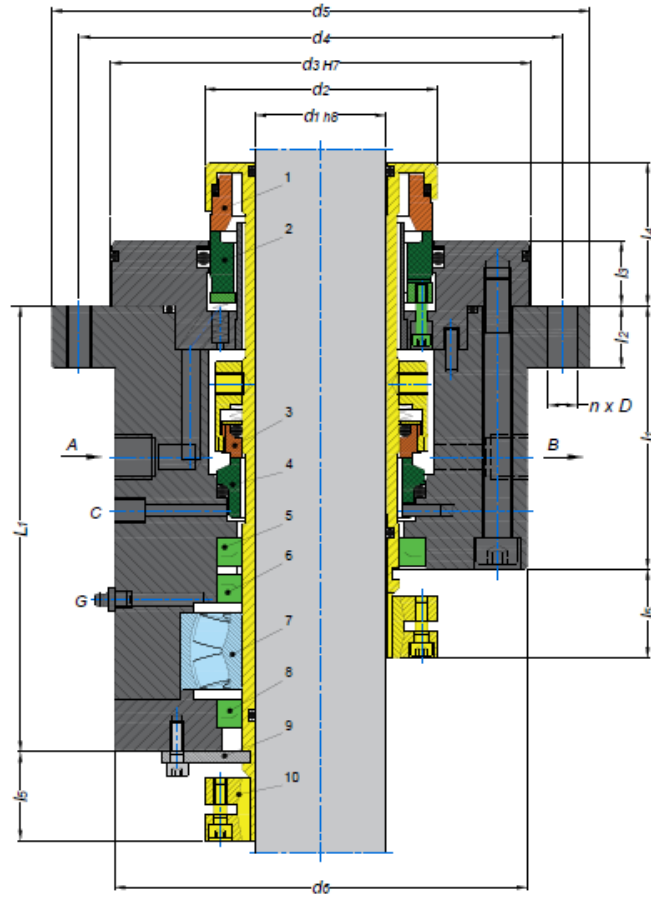
- Double Seal
- Used for Top, Lateral Entry Drives
- Unbalanced
- Independent of Rotation Direction
- With Cooling Flange
- Cartridge Unit

• **ADVANTAGES**

- An Ideal Seal For Standardizations
- Available With or Without Bearing
- Units Installed and Tested in Factory

• **OPERATING RANGES**

- Shaft Diameter: $d_1=20...200$ mm
- Temperature: $t=-20...200$ °C
- Pressure: $p_1=10$ bar (23 bar)
- Sliding Velocity: $V_g=10$ m/s



- | | |
|--|----------------------------------|
| 1. Döner Eleman/Rotary Seal | 5,6,8. Keçe/Lip Seal |
| 2. Sabit Eleman/Stationary Seat | 7. Rulman/Bearing |
| 3. Atm. Döner Eleman/Atm. Rotary Seal | 9. Montaj Pulu/Assembly Fixture |
| 4. Atm. Stationary Seat/Atm. Stationary Seat | 10. Sıkma Bileziği/Clamping Ring |

RT-MRD & RT-MRDB ÖLÇÜ TABLOSU/DIMENSION TABLE													
d1	d2	d3	d4	d5	d6	n x D	L1	l1	l2	l3	l4	l5	A, B
20	52,0	117,0	140,0	158,0	118,0	6 x 12	114,0	75,0	15,0	30,0	52,0	30,0	G 3/8
25	58,0	124,0	150,0	168,0	128,0	6 x 12	127,0	85,0	15,0	30,0	52,0	30,0	G 3/8
30	62,0	134,0	165,0	187,0	138,0	6 x 12	129,0	87,0	15,0	30,0	54,0	30,0	G 3/8
35	68,0	140,0	175,0	197,0	148,0	6 x 12	130,0	87,0	15,0	30,0	54,0	30,0	G 3/8
40	75,0	146,0	175,0	197,0	148,0	8 x 12	133,0	90,0	15,0	30,0	56,0	34,0	G 3/8
45	82,7	150,0	175,0	197,0	148,0	8 x 12	135,0	90,0	17,0	30,0	56,0	34,0	G 3/8
50	90,0	170,0	195,0	217,0	168,0	8 x 12	160,0	105,0	17,0	30,0	60,0	34,0	G 3/8
55	95,0	175,0	205,0	227,0	178,0	8 x 12	160,0	105,0	17,0	30,0	60,0	34,0	G 3/8
60	100,0	180,0	205,0	227,0	178,0	8 x 12	160,0	105,0	17,0	30,0	60,0	34,0	G 3/8
65	110,0	190,0	220,0	247,0	188,0	8 x 14	190,0	105,0	17,0	40,0	70,0	44,0	G 3/8
70	115,0	195,0	230,0	257,0	198,0	8 x 14	190,0	105,0	17,0	40,0	70,0	44,0	G 3/8
75	120,0	200,0	230,0	257,0	198,0	8 x 14	190,0	105,0	17,0	40,0	70,0	44,0	G 3/8
80	130,0	210,0	240,0	267,0	208,0	8 x 14	190,0	105,0	20,0	40,0	70,0	44,0	G 1/2
85	135,0	215,0	250,0	277,0	218,0	8 x 14	190,0	105,0	20,0	40,0	70,0	44,0	G 1/2
90	140,0	230,0	260,0	287,0	228,0	8 x 14	190,0	110,0	20,0	40,0	71,0	44,0	G 1/2
95	145,0	235,0	270,0	297,0	238,0	8 x 14	190,0	110,0	20,0	40,0	71,0	44,0	G 1/2
100	150,0	240,0	270,0	297,0	238,0	8 x 14	200,0	120,0	20,0	40,0	71,0	44,0	G 1/2
110	160,0	255,0	290,0	317,0	258,0	8 x 14	200,0	120,0	20,0	40,0	71,0	50,0	G 1/2
120	172,0	265,0	305,0	337,0	268,0	8 x 18	220,0	130,0	20,0	50,0	91,0	50,0	G 1/2
130	185,0	275,0	315,0	347,0	278,0	8 x 18	220,0	130,0	20,0	50,0	91,0	50,0	G 1/2
140	195,0	290,0	335,0	367,0	298,0	8 x 18	220,0	130,0	20,0	50,0	91,0	50,0	G 1/2
150	205,0	300,0	335,0	367,0	298,0	8 x 18	220,0	130,0	25,0	50,0	95,0	50,0	G 1/2
160	220,0	330,0	355,0	367,0	323,0	8 x 18	250,0	140,0	25,0	50,0	95,0	50,0	G 1/2
170	230,0	343,0	375,0	407,0	358,0	8 x 18	250,0	140,0	25,0	50,0	95,0	55,0	G 1/2
180	240,0	363,0	395,0	427,0	358,0	8 x 18	250,0	140,0	25,0	50,0	95,0	55,0	G 1/2
190	270,0	393,0	425,0	457,0	388,0	8 x 18	250,0	140,0	25,0	50,0	95,0	55,0	G 1/2
200	280,0	393,0	425,0	457,0	388,0	8 x 18	300,0	160,0	25,0	50,0	95,0	55,0	G 1/2

Tıklayın & Güncel Kalın!

Click & Stay Updated!



ROTASEAL®

SEALING SYSTEMS



HER SEKTÖRE SIZDIRMAZLIK ÇÖZÜMLERİ.



ROTASEAL SIZDIRMAZLIK SİSTEMLERİ A.Ş.

Ömerli Mah.Kos Koop Sanayi Sitesi Mısır Sk. No :10 P.K.34555 Arnavutköy/İstanbul/Türkiye

Tel: + 90 212 549 73 25(pbx)

Faks:+ 90 212 549 38 29

    /rotaseal . info@rotaseal.com . www.rotaseal.com

Adana Şubesi : adana@rotaseal .com

Tel: +90 322 503 93 93

Ankara Şubesi : ankara@rotaseal .com

Tel: +90 312 346 63 63

Bursa Şubesi : bursa@rotaseal .com

Tel: +90 224 443 05 33

Çorlu Şubesi : corlu@rotaseal .com

Tel: +90 282 653 56 76

Gebze Şubesi : gebze@rotaseal .com

Tel: +90 262 641 26 32